

## Construction of Machine Foundation

It is always advantageous to start machines as early as possible after their Installation/erection is over. The addition of Krete-X in the Foundation concrete will give it high early compressive strength enabling to run the machine earlier without waiting for a long curing time.

## Providing Waterproof Cement Pointing Rendering or Concrete

The use of Krete-X with cement reduces the water requirements, and hence the porosity in the cement mix is reduced and it becomes more watertight.

## Tidal Works

In tidal zone there are chances of construction or repair works done with ordinary cement being washed away by the next tide. Use of Krete-X with cement reduces the setting of cement to few hours, and the work is protected from the tide water.

## Direction For Use

### REPAIRING INDUSTRIAL FLOORS

**Preparation :** Chisel out the broken portion to a depth of 40 to 50 mm and the joints of the stone paving to a 25mm width and same depth, with vertical edges. Clean the area of all loose particles, dirt, and grease or oil. Our Red-E-Kleen is recommended for cleaning oil and grease soaked Floors. Wash the surface with water.

**Priming :** Dilute one part Krete-X with 4 parts of water. Mix it with cement to make a thick slurry. Apply this slurry with a brush on the wet surface, all around the sides and bottom.

**Filling :** Prepare following mix by Volume :

- 1 part Cement
- 1 part Sand
- 2 parts 12mm grit (Stone chips)

Mix dry and prepare a mortar by adding a solution prepared by diluting 1 part Krete-X liquid with the 4 parts of water. Fill up the hole or the broken joints in the stone paving with the mortar, strike it off to the desired level and then tamp float and trowel in the usual way. Cover the surface with wet burlaps after 4 hours, keeping it wet at least for a day.

### PROVIDING HARD, NON-DUSTING, IMPERMEABLE FLOORS

1. **Monolithic Floors :-** Use 1: 2: 3½ C. C. mix. Add 1.5 Litre of Krete-X per bag of Cement. Finish the surface with wood float and steel trowel. Do not dust cement.
2. **Topping :-** Use 1: 1: 2 C. C. mix using 5/8" size grit. Add 1.5 Litre of Krete-X per bag of Cement. The topping shall be laid to a minimum thickness of 25 mm on a freshly laid 1:2:4 C. C. or a set concrete base having been primed and prepared as mentioned above.

### IN CEMENT CONCRETE WORK, MFG. PRECAST UNITS, TIDAL WORK, MACHINE FOUNDATION ETC.

- 1 to 1.5 Litre of Krete-X may be used per bag of Cement.



# ConTech Chemicals

Chemists to the Building Industries

GRAM CONCHEM  
A/3, PANCHTIRTH APTS SARKHEJ ROAD, AHMEDABAD-380 007. (India)

Sahitya Mudranalaya Pvt. Ltd.

HERE'S  
CONTECH'S  
ECONOMICAL  
ANSWER  
TO YOUR  
FLOOR  
PROBLEMS

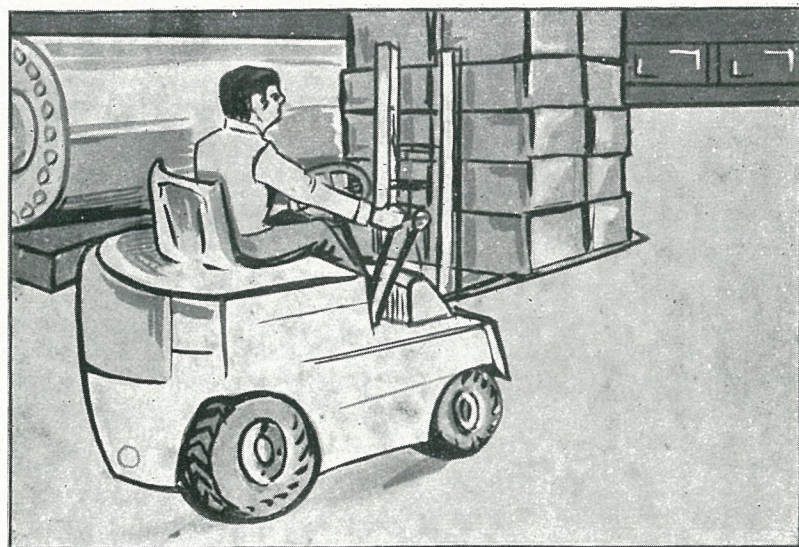
QUICK SETTER

PLASTICISER

INTEGRAL HARDNER

WATERPROOFER





Krete-X used for producing Tough Dustless Floor

### What is KRETE-X ?

Krete-X is a specially formulated blend of chemicals in liquid form, used with normal portland cement, having set accelerating properties. It produces a tough, non-shrink, waterproof concrete with high early and ultimate compressive strength.

### What Krete-X does ?

Accelerates Set—Increases strength :

By accelerating the hydration of cement-reacting chemically-Krete-X enables it attain a safe working strength at a much earlier age. The time of initial set is cut to 1/3 or 1/2 or more. The 28 days strength is attained only in 7 days. This offers many benefits in construction work.

Waterproofs the cement mix :

The addition of Krete-X results in 10 to 15% less gauging water being required which makes the concrete dense and watertight with higher ultimate compressive strength.

Improves workability of cement mix :

Krete-X improves the workability of cement mixes by imparting greater wetting ability to the gauging water, which permits greater ease of preparation, handling and placing the mix. As a result it flows in to the farthest

recess of the joints and fills them completely, eliminating voids in corners.

### Where Krete-X is used ?

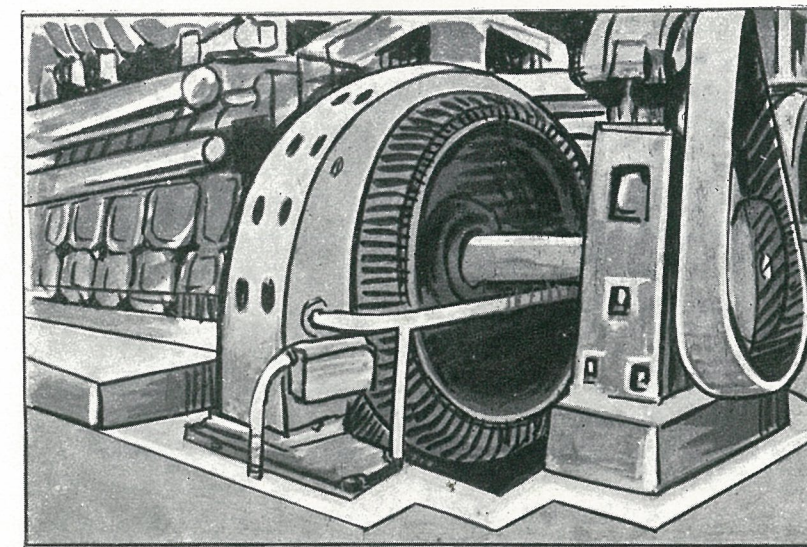
- \* Speeding up construction work.
- \* Repairing worn-out Industrial Floors and Pavements when early use is required and for providing Tough Dustless Floors.
- \* Providing Waterproof cement Pointing, Plaster or Concrete.
- \* Construction of Machine Foundation.
- \* Manufacturing Pre-cast Cement units.
- \* In Tidal works.
- \* Emergency repairs to hydraulic structures like Dams, Bridges, Tunnels as well as to the Harbour Structures.



Krete-X used for repairing Floor.

### Speeding the Construction Work :

Krete-X gives high early strength to the concrete mix, i.e. it attains same strength in half the time which it will take in ordinary case. Hence in poured concrete works, forms can be removed sooner and the structural member could be put in to use earlier.



Krete-X used for setting heavy equipments

### Repairing Worn Out Concrete Floors and Pavements

Maintenance of Concrete Floors has always been a complex problem, for you just can't repair concrete floors with concrete. Any attempt to do so inevitably meet with failure for as new concrete sets, it shrinks and pulls away from the old.

Krete-X is the perfect solution to this problem. It is used to repair floors by filling the depressions, potholes, cracks or opened out joints in stone paving. It sets soon, and allows the traffic to move in a few hours without requiring long curing. It bonds perfectly to old surface and does not pull out from the surface. It also lasts longer because of its increased compressive strength.

It can also be used while repairing Footpaths & Manholes or Stormwater lines on busy Roads, grouting Railings etc. by Municipalities.

### Providing Tough Dustless Floors

The addition of Krete-X makes hard, dustless, waterproof floors with increased strength, denseness, durability and internal curing and also enables floors and pavements to be used soon after laying.

### Manufacturing Precast Units

The use of Krete-X in the manufacture of precast concrete products allows early removal of moulds as they get high strength at a much earlier stage. Thus the forms can be re-used with greater frequency and the breakages in transit is also reduced.

**YOUR OLD WORNOUT FLOORS**

**CAN BE QUICKLY MADE AS**

**GOOD AS NEW WITH KRETE-X**